



## Harefield Road, Uxbridge, UB8 1GW

- Studio apartment
- NO Parking
- Modern development
- Students are welcome
- Secure entry systems
- High Street location
- Furnished property
- EPC Rating - B
- Available February 2026
- Moments from station

**£1,195 PCM**

Cameron Estate Agents  
195 High Street,  
Middlesex, Uxbridge, UB8 1LB

E: [uxbridge@cameron.co](mailto:uxbridge@cameron.co)  
T: 01895252000

[www.cameron.co](http://www.cameron.co)

arla | propertymark

PROTECTED

naea | propertymark

PROTECTED

Whilst every care has been taken to ensure the accuracy of these particulars, none of the statements contained herein are to be relied upon as representations of fact. These particulars do not constitute an offer or contract.

**Description**

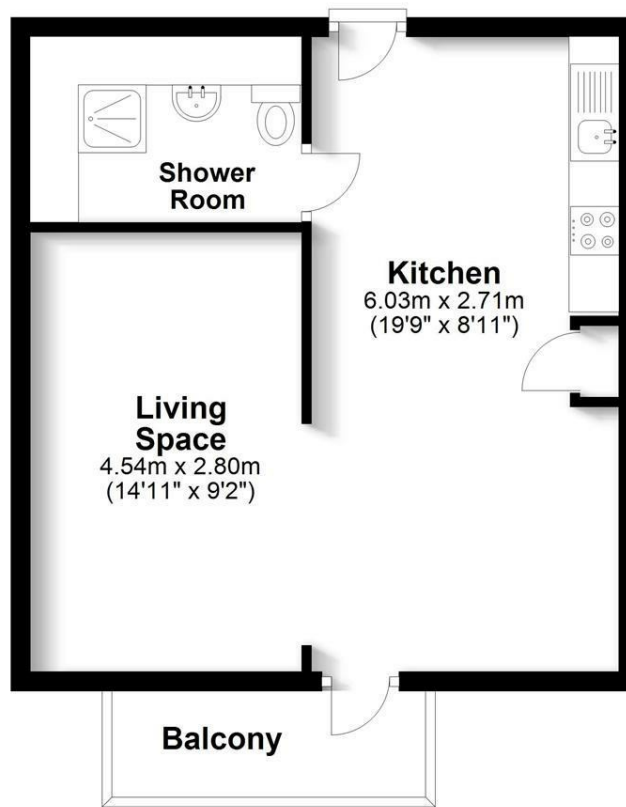
Cameron present this large studio suite in the most exclusive development in Uxbridge, Panorama. Located on the second floor offering an open plan kitchen/living room, separate shower room, storage and modern fixtures and fittings. Presented to the market FURNISHED and available early February 2026 - Students, you must be fast to book this one, no parking.

**IMPORTANT NOTICE**

These particulars have been prepared upon information supplied by the Vendor and should be verified by your surveyors and solicitors. In accordance with the Property Misdescriptions Act 1991 we have prepared these sales particulars as a general guide to give a broad description of the property. They are not intended to constitute part of an offer or contract. We have not carried out a structural survey and the services, appliances and specific fittings have not been tested. All photographs, measurements, floor plans and distances referred to are given as a guide only and should not be relied upon for the purchase of carpets or any other fixtures or fittings. Lease details service charge and ground rent (where applicable) are given as a guide only and should be checked and confirmed by your solicitor prior to exchange of contract

## Second Floor

Approx. 35.3 sq. metres (380.4 sq. feet)



Total area: approx. 35.3 sq. metres (380.4 sq. feet)



# Cameron



Whilst every care has been taken to ensure the accuracy of these particulars, none of the statements contained herein are to be relied upon as representations of fact. These particulars do not constitute an offer or contract.